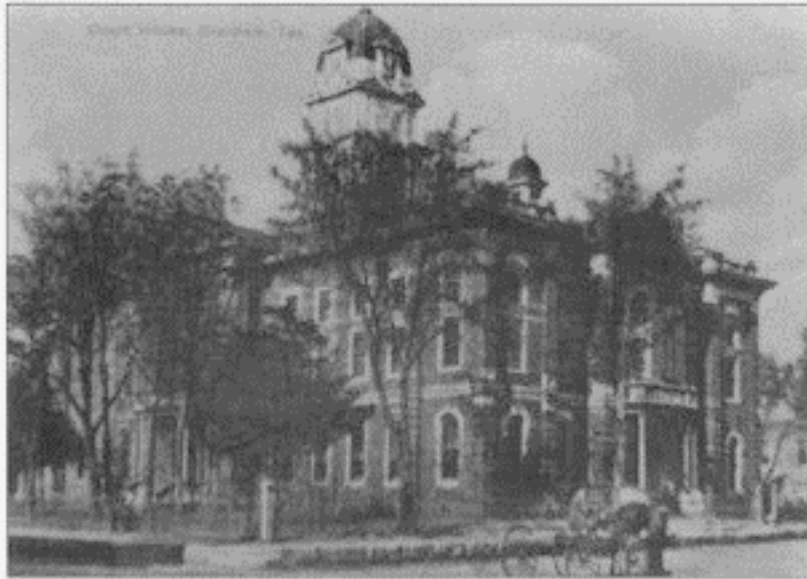


# *Washington County Texas 2025*



1884 Washington County Courthouse

A guide to your County government

**6th Edition**

*updated March 27, 2025*

This book is dedicated to those  
who blazed the trail before us  
and faithfully served this County.

**By**

**Washington County Clerk  
100 East Main Street  
Brenham, Texas 77833**

**All Rights Reserved**

## ***WELCOME . . .***

On behalf of the Elected Officials and Department Heads of Washington County, thank you for your interest in Washington County Government. We hope you find this information helpful and enlightening.

To our County employees, we offer a heartfelt THANK YOU for their loyalty and service to our community.

We, in Washington County, are most proud of our rich heritage, steeped in the very beginning of Texas History. Through this publication, we share some of this heritage and remember those that faithfully worked in county government over the years. Their diligence has enabled us to enjoy life in this beautiful and thriving county and our hope is that we continue to prosper and flourish, while planning for the future.

Compiled by:

**Beth A. Rothermel**  
Washington County Clerk  
Brenham, Texas

## Table of Contents

<b>WELCOME . . . . .</b>	<b>3</b>
<b>EARLY HISTORY OF WASHINGTON COUNTY . . . . .</b>	<b>5</b>
<b>STATISTICS.....</b>	<b>7</b>
<b>CURRENT ELECTED OFFICIALS . . . . .</b>	<b>8</b>
<b>APPOINTED OFFICIALS/DEPARTMENT HEADS . . . . .</b>	<b>8</b>
<b>GOVERNING BODY -.....</b>	<b>9</b>
COUNTY JUDGE . . . . .	10
COUNTY COMMISSIONERS . . . . .	11
DISTRICT JUDGES . . . . .	13
DISTRICT ATTORNEY . . . . .	14
COUNTY COURT AT LAW JUDGE . . . . .	15
COUNTY ATTORNEY . . . . .	16
DISTRICT CLERK . . . . .	17
COUNTY CLERK . . . . .	18
SHERIFF . . . . .	19
TAX ASSESSOR-COLLECTOR . . . . .	20
COUNTY TREASURER . . . . .	21
JUSTICES OF THE PEACE . . . . .	22
CONSTABLES . . . . .	24
<b>APPOINTED OFFICES . . . . .</b>	<b>25</b>
COUNTY AUDITOR . . . . .	26
VETERAN'S SERVICE OFFICER . . . . .	27
EMS (EMERGENCY MEDICAL SERVICES) . . . . .	28
COUNTY ENGINEER . . . . .	29
EMERGENCY MANAGEMENT COORDINATOR . . . . .	30
ELECTION ADMINISTRATOR . . . . .	31
INFORMATION TECHNOLOGY . . . . .	32
E911 . . . . .	33
EXPO DIRECTOR . . . . .	34
ENVIRONMENTAL HEALTH DEPARTMENT . . . . .	35
HUMAN RESOURCES . . . . .	36
ADDRESSING . . . . .	37
FACILITIES MAINTENANCE . . . . .	38
ADULT PROBATION . . . . .	39
JUVENILE PROBATION . . . . .	40
EXTENSION SERVICE . . . . .	41
<b>SOURCES . . . . .</b>	<b>42</b>
<b>HISTORY OF OFFICEHOLDERS . . . . .</b>	<b>43</b>

# ***Early History of Washington County***

Artifacts found in the area of Washington County, indicate that it has been occupied by humans for perhaps 9,000 years or more.

Early frontiersmen to the area, found Tonkawa Indians living in what is now Washington County.

Most likely the first Europeans to this region were led by the French explorer Rene Robert Cavelier, Sieur de La Salle. The Spanish later constructed a road through the County to connect Nacogdoches and Goliad.

The County of Washington is one of the oldest and most historic in the State of Texas. The first settlers arrived in 1821 - 1822 and were part of Stephen F. Austin's colonists. Many of the early settlers were part of the "Old 300" families, those being the first 300 families to receive tracts of land through Empresario Stephen F. Austin on behalf of the Mexican State of Coahuila y Tejas.

In 1822, a ferry was put into operation across the Brazos River, near its confluence with the Navasota River. The County's first community sprung up at the site of the ferry and was named Washington.

Washington County, at its beginning, covered an area from western Lee County to eastern San Jacinto County, north to most of present day Walker County, and also took in most of Grimes, Brazos and Burleson Counties. It was first known as the Department of Brazos.

Washington County was, most likely, named for George Washington, first president of the United States; however, an early source says it was named for Washington, Georgia, where many of the early settlers came.

The County is proud to be the site of the signing of the Texas Declaration of Independence, at Washington-on-the-Brazos, on March 2, 1836. The county was officially created on March 17, 1836.

Washington County is located in the center of the "core" of Texas. Its present county seat of Brenham is 70 miles from Houston, 90 miles from Austin, 158 miles from San Antonio, 210 miles from Dallas/Fort Worth, and only 40 miles from Bryan/College Station. The County is considered to be a rural county.

## **There have been three County seats -**

Washington	1836 - 1841
Mt. Vernon	1841 - 1844
Brenham	1844 - present

## **There have been six courthouses -**

Washington	1836
Mt. Vernon	1841
Brenham	1844, 1853, 1883, 1939

(The former Brenham National Bank building, at 100 S. Park Street, was renovated as the Courthouse Annex in 2009/2010. The County Treasurer, Auditor, Environmental, Veterans Service and Human Resources offices moved from the Courthouse into the Annex in July, 2010. The lobby of the Annex is used for meetings, early voting and an extra courtroom when necessary.)

## **Early towns & communities -**

- Jacksonville - 4 miles north of Chappell Hill
- Turkey Creek - 6 miles east of Brenham
- Rock Island - 3 miles south of the Graball Community
- Mustang - 3 miles east of Brenham
- Mt. Vernon - 6 miles west of Brenham (2<sup>nd</sup> county seat)
- Tiger Point - 6 miles south of Brenham
- Chappell Hill - 10 miles east of Brenham (incorporated for a time)
- Gay Hill - northwest of Brenham
- Evergreen - west of Brenham; located in present day Lee County
- Union Hill - 3 miles north of Burton
- Warren - at the mouth of New Year's Creek

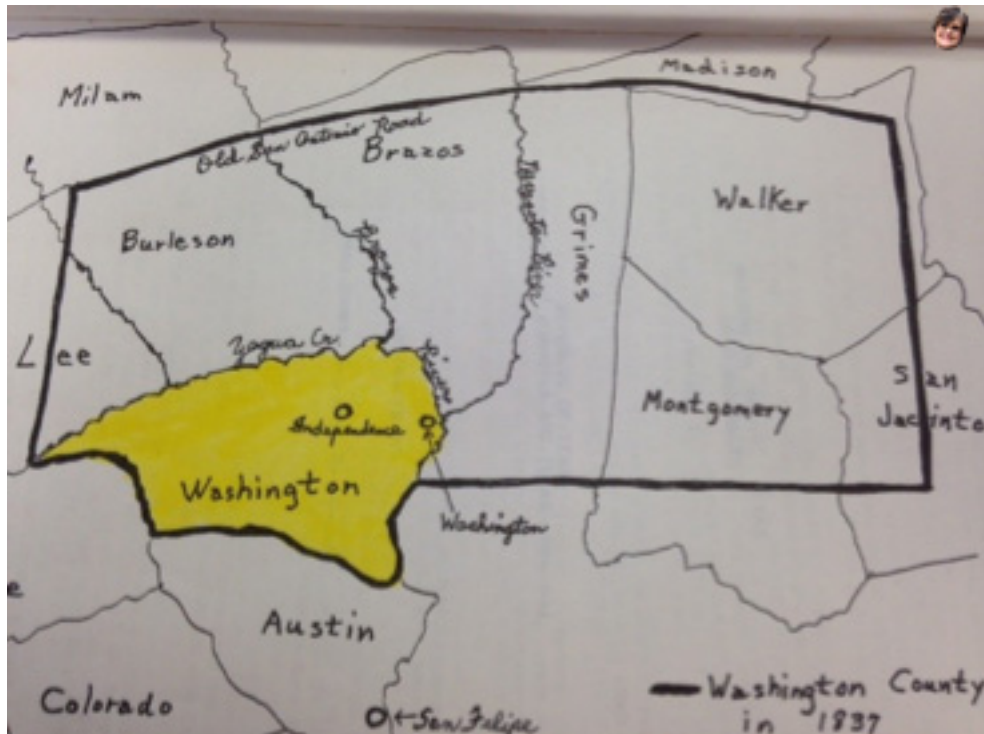
Independence – 10 miles north of Brenham (incorporated for a time)

**Incorporated Cities of the County today - Brenham & Burton**

**Zip Codes currently used in the County –**

Brenham	77833 & 77834
Burton	77835
Chappell Hill	77426
Washington	77880

**Original Washington County boundary in 1836 –**



Washington County was originally known as the Department of Brazos and was composed of land from the above pictured counties.

In December 1837, the eastern part of the area became Montgomery County which included parts of present-day Grimes, Walker, Madison, Montgomery and San Jacinto Counties.

In 1841, Brazos County was organized (first named Navasota Co.)

In 1846, Burleson County was organized. In 1874, Lee County was organized.

# STATISTICS

2020 census – 35,805  
2010 census - 33,718  
2000 census - 30,373  
1990 census – 26,154  
1980 census – 21,998  
1970 census – 18,842  
1960 census – 19,145  
1950 census – 20,542  
1940 census – 25,387  
1930 census – 25,394  
1920 census – 26,654  
1910 census – 25,561  
1900 census – 32,931

**Households** – 13,906

**Median household income** - \$65,913

**Area** – 603.95 square miles

## **Adjacent Counties -**

Brazos (north)  
Grimes (northeast)  
Waller (east)  
Austin (south)  
Fayette (southwest)  
Lee (west)  
Burleson (north)

Washington County lies about 90 miles east of Austin and about 120 miles from the Gulf of Mexico.

The surface of the County is dominantly rolling to gently rolling.

The County comprises an area of 392,320 acres.

The general elevation is 200 to 350 feet above sea level. The highest point, 476 feet above sea level, is about three-fourths mile northeast of Old Gay Hill and the lowest point 155 feet above sea level, is in the southeastern part of the county, in the Brazos River bottom.

## ***CURRENT ELECTED OFFICIALS***

County Judge	John Durrenberger
Commissioner, Precinct 1	Misti Corn
Commissioner, Precinct 2	Candice Bullock
Commissioner, Precinct 3	Kirk Hanath
Commissioner, Precinct 4	Dustin Majewski
Court at Law Judge	Eric Berg
County Attorney	Renee Mueller
District Clerk	Kimberley Boyce
County Clerk	Nick Prenzler
Sheriff	Trey Holleway
Tax Assessor-Collector	Cheryl Gaskamp
Treasurer	Peggy J. Kramer
Justice of the Peace, Precinct 1	Douglas Zwiener, Jr.
Justice of the Peace, Precinct 2	Douglas Cone
Justice of the Peace, Precinct 3	Dane Houston
Justice of the Peace, Precinct 4	Harold C. "Buddy" Riddle
Constable, Precinct 1	Ken Holle
Constable, Precinct 2	Seth Klehm
Constable, Precinct 3	Brad Kuecker
Constable, Precinct 4	Greg Rolling

## ***APPOINTED OFFICIALS/DEPARTMENT HEADS***

County Auditor	Shawna Dyer
EMS Director	Kevin Deramus
Veterans' Service Officer	Eric Posern
County Engineer	Wesley Stolz
Emergency Management Coordinator	Bryan Ruemke
Fairgrounds Supervisor	Harrison Williams
IT Director	T. J. Harris
9-1-1 Director	
Extension Agent	Kara Matheney
Environmental	Mark Marzahn
Facilities Management	Bobby Branham
Rural Addressing	Aaron Harmon



## ***Governing Body -***

Washington County is a public corporation and a political subdivision of the State of Texas. The general governing body of the County is the elected five-member Commissioners' Court in accordance with Article 5, Paragraph 18 of the Texas Constitution. Commissioners serve four-year staggered terms with two members being elected every two years. The County Judge is elected at large to serve a four-year term and is the presiding officer of the Commissioners' Court.

Many people know that the Commissioners' Court is responsible for building and maintaining the roads and bridges of the County. They also have the responsibility to adopt the budget and set the tax rate that is sufficient to fund the personnel, equipment and infrastructure necessary to deliver the services provided by the County. The Court is responsible for conducting business on behalf of the County and only the Commissioners' Court can enter into contracts on behalf of the County. The Court also determines the number and type of County employees and their compensation, acquire property for right-of-way or other public uses, adopt and enforce subdivision regulations, subsidize rural fire protection, and supervise and control the County Courthouse and other County buildings and facilities.

Following each census, if the population varies more than 10% between two or more precincts, Commissioners' Court must also re-establish precinct boundaries (redistricting).

## County Judge



### **John Durrenberger**

100 E. Main, Suite 104  
Brenham, TX 77833  
979-277-6200

The Texas Constitution combines elements of legislative, judicial and executive functions in the position of County Judge who is elected county wide to a four year term coinciding with the term of the Governor. The Constitution also vests broad budgetary and administrative authority over county government operations to the County Judge.

The County's legislative body is the Commissioners' Court which oversees all County departments through the court's responsibilities to enact policy and adopt the budget. The County Judge is the presiding officer and a voting member of the Commissioners Court.

The constitutional County Judge (County Judge) is the only judge of a "court of record" in Texas not required to be an attorney, but the Texas Constitution stipulates that the Judge "shall be well-informed in the law of the state". The Constitutional County Judge shares concurrent jurisdiction with the statutory County Judge (County Court at Law Judge) in many civil cases, misdemeanor criminal cases, and probate matters, including mental illness and guardianships. Since the Washington County Court at Law was established, it fulfills most of the judicial duties of the county court in Washington County. The County Judge still has other judicial functions including serving on the juvenile board (currently as Chair), performing marriages and holding certain administrative hearings.

As the chief budget officer, the County Judge in collaboration with the County Auditor and the Commissioners' Court prepares the budget. Every purchase order is reviewed and signed by the County Judge and auditor before being presented to the Commissioners' Court for approval of payment.

Pursuant to the Texas Disaster Act of 1974, the County Judge is designated as the executive officer for civil defense within the county, which includes the duties of emergency management in response to a disaster. He is also responsible for calling elections, posting election notices and for receiving and canvassing the elections returns. When Commissioners' Court approves agreements and contracts, the County Judge signs as the County's executing officer.

Term of office is 4 years.

See page 44 for list of County Judges.

## County Commissioners



### **Precinct 1 – Misti Corn**

100 E. Main, Suite 104  
Brenham, Texas 77833  
979-277-6200



### **Precinct 2 – Candice Bullock**

100 E. Main, Suite 104  
Brenham, Texas 77833  
979-277-6200



### **Precinct 3 - Kirk Hanath**

100 E. Main, Suite 104  
Brenham, Texas 77833  
979-277-6200



### **Precinct 4 – Dustin Majewski**

100 E. Main, Suite 104  
Brenham, Texas 77833  
979-277-6200

The Commissioners' Court sets the tax rate, establishes policies for County operations, approves contracts for the County and develops and adopts the County budget with the resources available, as estimated by the County Auditor. The Commissioners' Court is also responsible for development of policies and orders, approving financial commitments and appointment of various department heads. The management and leadership provided by members of the Commissioners' Court and the elected and appointed officials of other key County offices is crucial to the success of the County in financial management and growth.

Prior to 1956, terms were 2 years and all four Commissioners ran at the same time. However in 1955, a Constitutional Amendment was approved by voters to change terms to 4 years - staggered. Therefore, 2 Commissioners are on the ballot in a gubernatorial election year and 2 on the ballot in a presidential election year.

Likewise, Article 5, Section 18 of the Texas Constitution was amended in 1983 to provide for 4 year terms, with elections in the presidential and gubernatorial election years.

Commissioners in Precincts 1 and 3 are elected during the presidential election year and Commissioners in Precincts 2 and 4 are elected during the gubernatorial election year.

Terms are 4 years.

See pages 45 - 48 for list of County Commissioners that have served.

## District Judges



**John Winkelmann**

21<sup>st</sup> Judicial District Judge  
100 E. Main, Ste. 304  
Brenham, TX 77833  
979-277-6200



**Carson Campbell**

335<sup>th</sup> Judicial District Judge  
100 E. Main, Ste. 304  
Brenham, TX 77833  
979-277-6200

There are 459 District Courts in the State of Texas, identified by separate numbers. Each District Court has one Judge. Three hundred and sixty-one of District Courts serve 1 County and 98 of the Courts serve multiple counties.

District Courts have certain geographical jurisdiction and subject matter jurisdiction. The geographical area served by each court is established by the Texas Legislature, but each County must be served by at least one District Court.

The District Judges for Washington County are multiple-county Judges that serve Bastrop, Burleson, Lee and Washington Counties.

The judicial power of the Courts is from Article 5, Section 1 of the Texas Constitution. The two types of courts in Texas are trial courts and appellate courts. The District Courts are trial courts with general subject-matter jurisdiction. Generally, this jurisdiction includes felony criminal prosecutions, family law cases, suits over title to land, election contests, juvenile matters and civil suits with amount in controversy of at least \$200.00. Trial courts are courts in which witnesses are heard, exhibits are offered into evidence, and a verdict (in a jury trial) or a decision (in a case tried by a judge alone) is reached based on facts of the case.

In a civil case, the decision or verdict determines which party wins the lawsuit. In a criminal case, the decision or verdict determines if the defendant is guilty or not of the crime alleged.

Terms of office are 4 years.

## District Attorney



### **Derek Eastep**

110 S. Park  
Brenham, TX 77833  
979-277-6247

The main duty of the district attorney is to represent the state in criminal cases. The 21<sup>st</sup> Judicial District Attorney works closely with law enforcement officers by consulting during investigations of cases to be heard before the District Courts. The District Attorney does this with the assistance of five Assistant District Attorneys and two TCDLEO certified investigators. The District Attorney only represents the State in felony cases by determining whether prosecution in any given case should be instituted and, if instituted, presenting to the Grant Jury and ultimately seeking justice by trial or pleas bargains.

The 21<sup>st</sup> Judicial District also has a progressive victim services division led by a full time Victim Assistance Coordinator. The services include, but not limited to, seventy-two hour notice to a crime victim about services available, assisting victims with applications to the Attorney General's Crime Victims Division, referring victims to local services and notifying victims of plea offers and court settings.

As of September 1, 2019, when legislation was passed by the Texas Legislature, the District Attorney serves Washington County only, serving the 21<sup>st</sup> and 335<sup>th</sup> Judicial District. Prior to that time, the District Attorney served both Washington and Burleson Counties.

Term of office is 4 years.

## County Court at Law Judge



### **Eric Berg**

100 E. Main, Suite 202  
Brenham, TX 77833  
979-277-6200

The Washington County Court at Law was created on January 1, 1989 by House Bill 975, passed in 1987, by the Texas Legislature. Prior to 1989, the Constitutional County Judge heard cases filed in the County Court.

Criminal matters - original jurisdiction to preside over class A and B misdemeanor offenses. Hears arraignments, pleas, motions, jury trials and bench trials (a trial before the judge). Also hears appeals from Justice of the Peace courts and Municipal courts.

Civil matters – original jurisdiction to preside over civil lawsuits (up to \$200,000 in controversy), probate matters, guardianships, eminent domain, occupational driver's licenses, bond forfeitures, and hears appeals from ALR decisions, Justice of the Peace courts and Municipal courts.

Family matters – original (and concurrent) jurisdiction with District Courts to preside over divorce and child custody hearings, as well as Child Protective Services cases. Also hears Juvenile Justice matters and appeals from Title IV-D court.

Term of office is 4 years.

### **Court at Law Judges:**

Robert S. Pieratt	1989 -1994
Matthew Reue	1995 – July 1, 2016
Eric Berg	July 1, 2016 - present

# COUNTY ATTORNEY



**Renee Mueller**

100 E. Main, Suite 200  
Brenham, TX 77833  
979-277-6200

The duties of the Office of County Attorney:

1. Represent the State of Texas in Class A & B criminal misdemeanor cases filed in the Washington County Court at Law; this includes working with law enforcement officers in the investigation and preparation of these cases.
2. Prosecution of juvenile offenders.
3. Represent victims of domestic violence and stalking in protective orders.
4. Represent the Texas Department of Family & Protective Services in cases of child abuse and neglect.
5. Represent the State of Texas in Class C criminal misdemeanor cases filed in the four Justice of the Peace Courts of Washington County.
6. Represent the applicants in mental health commitments and guardianships.
7. Provide legal advice to the Commissioner's Court and other elected and appointed County officials.

Term of office is 4 years.

(See page 49 for previous County Attorney list.)



# DISTRICT CLERK



**Kimberley Boyce**  
100 E. Main, Ste. 304  
Brenham, TX 77833  
979-277-6200 x. 5334

## **GENERAL DUTIES –**

- Responsible for running office in an organized and efficient manner
- Serves as custodian of records for District Court
- Coordinates jury panel selection process
- Coordinates Jury Commissioners and Grand Jury Selection process
- Keep up with all District Court, County Court at Law and Attorney General settings
- Assist judge in courtroom during District Court, Special Hearings and Jury Trials
- Prepare monthly schedule of court dates for Bailiffs
- Manages trust funds and court registry funds
- Required to attain educational hours by attending seminars and conferences each year
- Responsible for daily, monthly and yearly reports
- Responsible for Records Management and Records Preservation
- Responsible for preparing and monitoring yearly budget in District Clerk's office
- Works closely with County Commissioners, County Judge, County Auditor, and County Treasurer

## **GENERAL FILINGS IN THE DISTRICT CLERK'S OFFICE -**

- County Court at Law – cases pertaining to Family Law
- Attorney General Cases
- Juvenile cases
- CPS cases
- Felony Criminal cases
- Civil cases
- Tax Suits

Term of office is four years.

(See page 50 for listing of previous District Clerks.)

## COUNTY CLERK



### **Nick Prenzler**

100 E. Main, Ste. 102  
Brenham, TX 77833  
979-277-6200 x. 5303

The duties of the County Clerk are widely varied and include:

Clerk of the County Court - probate, guardianship, criminal A&B misdemeanors, and civil - up to \$250,000 in controversy

Ex-officio member of Commissioners' Court - writes minutes on posted meetings

Record Official Records (deeds, liens, affidavits, oil & gas leases, releases, etc.)

Birth and Death registration & issuance of certified copies

Marriage License issuance

Issuing Warrants for arrest and commitments to jail on A&B misdemeanors

Filing plats approved by the County or City

Military Discharge records

Brand recordings

Estray recordings

Filing depositions for all County offices

Filing bonds of all County and Appointed officials

Posting notices of public meetings

Wills for Safekeeping

School Census records 1912-1969

Minutes of rural schools

Deposits and handles cash bonds on criminal cases

Presents an annual Archive Plan to the Commissioners' Court

Invests funds held in the registry of the court, if ordered

Prepares annual budget for County Clerk's office, records management and archive funds

Term of office is four years.

(See page 51 for listing of previous County Clerks.)

# SHERIFF



## **Trey Holleway**

1206 Old Independence Road  
Brenham, TX 77833  
979-277-6251

**Mission Statement:** The Washington County Sheriff's Office mission is to be the model of law enforcement excellence by working in partnership with the community and others to fight crime and the fear of crime, to enforce the laws while safeguarding the constitutional rights of all people and to provide quality service to all of our residents and visitors.

It is essential that all members of our Sheriff's office remember that in the execution of their duties they act not for themselves but for the good of the public. They shall perform their service with honesty, courage, discretion and sound judgment while always applying common sense to the difficult decisions we must make.

The Washington County Sheriff has countywide jurisdiction, but in practice, mostly concentrates his activities outside of the city limits where municipal officers cannot operate. The Sheriff is responsible for the overall entire operation of the county jail (housing over 95 - 110 inmates per day), along with over-operational supervision of approximately 60 employees and contract staff, the largest office within the Washington County government system. The Sheriff is charged with the authority and responsibility of the daily safety of its citizens by ensuring Sheriff's deputies are making arrests of criminal suspects, investigating all crimes reported, enforcing traffic laws on State and County roadways, maintaining security in both the County and District Courts, serving subpoenas, warrants, criminal indictments, and writs along with maintaining sexual offender records. The Sheriff's responsibilities require him to develop procedures to serve as guidelines for proper conduct of employees and monitor the effectiveness of narcotic and criminal investigations.

The Sheriff also prepares and administers capital and operating budgets as approved by the Commissioners' Court, is part of the Washington/Brenham Emergency Management Group, and serves as the Incident Commander during times of heightened emergencies.

Term of office is four years.  
(See page 52 for list of previous Sheriffs.)

## TAX ASSESSOR-COLLECTOR



**Cheryl Gaskamp**

100 E. Main, Ste. 100  
Brenham, TX 77833  
979-277-6200 x. 5313

The County Tax Assessor-Collector is designated by statute as the agent for the State Department of Highways and Public Transportation for collection of motor vehicle fees. Under the registration statutes, every owner of a motor vehicle is required to register it with the Tax Assessor in the county in which the owner resides.

Special inventory tax is collected from vehicle, trailers, heavy equipment, and manufactured home dealers. This tax is based on the selling price of each unit and paid monthly to the Tax Assessor-Collector's office. The funds are placed in an escrow account to pay each dealers yearly tax bill to the appraisal district.

The Tax Office collects Texas Alcohol Beverage taxes imposed by the county which is disbursed to the County Treasurer.

The Tax Office processes handicap parking placards and disabled license plates. The applicant must submit a prescription from the doctor.

As with all elected county officials, the Tax Assessor-Collector has ultimate authority over the operations of the office, including the authority to hire and fire employees and direct their daily activities. The Tax Assessor-Collector also has authority to determine how to use all other resources allocated to the office during the budget process.

Term of office is 4 years.

(See page 53 for list of previous Tax Assessor-Collectors.)

# COUNTY TREASURER



**Peggy J. Kramer**  
100 W. Main, Ste. 105  
Brenham, TX 77833  
979-277-6200 ext.5001

Chief custodian of County finances  
Pays, applies and disburses County funds  
Accepts funds daily from all County departments that collect monies  
Operates as chief liaison between the County and the County's depository bank  
Maintains records of all deposits and withdrawals

**Accounts Payable** – Claims are processed and paid within 30 days of the date of the invoice, with bills being paid weekly.

**Accounts Receivable** – all monies due to the County are recorded and processed. County deposits are made daily and recorded to the proper County departments.

**County Budget** – assists the County Judge and County Auditor in preparing the annual budget.

**Bank Reconciliations** – all accounts are reconciled monthly, including interest reports, monthly cash flow reports, fund recap reports, indebtedness reports, investments reports. All reconciliations are submitted to the Commissioners' Court for approval.

**County Investments** – in accordance with County investment policy and the Public Funds Investment Act of 1995.

**Insurance** – responsible for all coverage for County properties, vehicles, equipment and liabilities, volunteer fire department vehicles and claims.

**Collection on Leases** – Washington County owns and leases over 12,400+ acres of school land property located in Tom Green County. The property is used for farming, hunting and grazing.

**Jury** – disperses cash jury payments.

**State Fees and Fines Report** – statements of revenues received are calculated on a monthly and/or quarterly basis. Statements are remitted with payment to the State Comptroller.

**Hotel/Motel** – The County collects and distributes 7% additional tax from anyone who stays in one of the 30+ hotel/motel/Bed &Breakfasts in the County.  
Term of office is 4 years. (See page 54 for list of previous Treasurers)

## JUSTICES OF THE PEACE



### **Precinct 1 - Douglas Zwiener, Jr.**

1305 E. Blue Bell Road  
Brenham, TX 77833  
979-277-6260



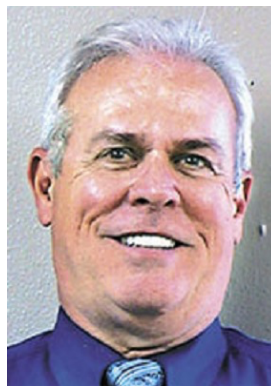
### **Precinct 2 – Douglas Cone**

4260 Sausage Lane  
Chappell Hill, TX 77426  
979-836-5008



### **Precinct 3 – Dane Houston**

100 E. Main, Suite 200  
Brenham, TX 77833  
979-277-6200 x132



### **Precinct 4 – Harold C. “Buddy” Riddle**

P. O. Box 120 (mailing address)  
402 N. Main Street (physical address)  
Burton, TX 77835  
979-289-2921

The Court system in Texas is made up of six main types of Courts: The Texas Supreme Court, the Appellate Courts, the District Courts, Constitutional and Statutory County Courts, Justice Courts (Justice of the Peace) and Municipal Courts. The Justice Court presides over fine-only offenses, such as Class C Misdemeanors, Civil Cases (Small Claims Court), and Magistrate duties. The Justice of the Peace may also perform weddings and they act as Coroners for the County.

Out of court cases held each year in the State of Texas, the Justice Court will hear 95% of the criminal and civil cases filed. There are many types of hearings conducted and duties to perform, such as:

Bond Surrenders  
Civil Hearings  
Dangerous Animal Hearings  
Failure to Attend School  
Animal Seizure cases  
Emergency Mental Commitments  
Emergency Protection Orders  
Examining Trials  
Bad or Hot Check Cases  
Magistrate Duties at the Jail  
Civil Court for cases up to \$10,000 in dispute

Disposition of Stolen Property  
Driver License Suspensions  
Evictions  
Hunting and Fishing Violations  
Issuing Arrest Warrants  
Alcohol/Tobacco Cases with Minors  
Inquests/Death Investigation  
Thwarting School attendance cases  
Occupational License in some cases  
Traffic Offenses  
Illegal Lockout and Re-entry

All four Justices of the Peace are elected in a gubernatorial election year.  
Term of office is 4 years.

(See pages 55 - 64 for a listing of previous Justices of the Peace.)



# CONSTABLES



**Precinct 1 - Ken Holle**  
979-277-6200



**Precinct 2 – Seth Klehm**  
979-277-6200



**Precinct 3 – Brad Kuecker**  
979-277-6200



**Precinct 4 – Greg Rolling**  
979-277-6200

These peace officers are the first link in the County's chain of law enforcement. Along with their deputies, Constables have all the enforcement powers of Texas peace officers. They are sometimes referred to as the executive officer of the Justice of the Peace Courts although they also serve the County and District Courts with service of papers.

Their duties are to:

- Subpoena Witnesses
- Bailiff of all Courts
- Execute judgements
- Service of process

In addition, they may perform patrol functions and make criminal investigations. They are involved in the overall effort to reduce the effects of crime in their communities, including in some cases the operation of truancy programs. All four Constables are elected during the presidential election year.

Term of office is four years. (See pages 65 - 73 for a listing of previous Constables.)



## ***Appointed Offices***

## COUNTY AUDITOR



**Shawna Dyer**  
100 W. Main, Ste. 104  
Brenham, TX 77833  
979-277-6229

The County Auditor maintains the integrity of the financial administration of County Government. The County Auditor's primary duty is to oversee the County's financial recordkeeping and assure that all expenditures comply with the annual County Budget.

The County Auditor, by law, has continuous access to all books and financial records and conducts detailed reviews of all County financial operations.

The office of the County Auditor is not under the control of the County's administrative body - the Commissioners' Court. The County auditor is appointed to a two (2) year term by the District Judges having jurisdiction in Washington County. The office of County Auditor was created in the Constitution of 1876, and subsequently, it was determined that County Government needed a system of checks and balances so as to ensure no one branch of government would be without accountability in complying with the State's statutes. In response to addressing a need of checks and balances, the position of County Auditor emerged years later in 1905.

While Commissioner's Court is the budgeting body in County Government, by law, the approval or rejection of claims for disbursement of County funds, requires both the County Auditor and the Commissioners' Court. The integrity of the County financial administration is entrusted to this dual control system of "checks and balances".

The County Auditor has general oversight of all books and records of all county officials.

The Auditor is charged with strictly enforcing laws governing County finances.

The Auditor assists the Commissioners' Court in preparation of the County Budget. The Auditor also assists the independent auditors in the preparation of the annual audited financial statements.

**A. Q. Plummer    1990 - 1996**  
**Sharon Stolz    1997 – 2022**

**Shawna Dyer        2023 -**

## VETERAN'S SERVICE OFFICER



### **Eric Posern**

100 W. Main, Suite 102  
Brenham, TX 77833  
979-277-6228

Provides information and advocacy for veterans and their families concerning benefits available from the U. S. Department of Veterans Affairs and other agencies. Assists with applications for disability compensation, pensions, death benefits, medical care, educational assistance, home loans, insurance, and other programs.

### **Veterans' Service Officers -**

F. W. Mieling	1945-1946
William Schroeder	1946-1948
Paul Bowen	1948 - 1951
William Schroeder	1951 - 1958
Adolph F. Wiede	1958 - 1971
Lola Wiede	1971
Mrs. John Remmert	1972
William Schroeder	1973 - 1987
Leroy Loesch	1987 - 1999
Kenneth Mueller	2000 – Jan. 31, 2019
Eric Posern	Feb. 1, 2019 - present

## EMS (Emergency Medical Services)



### **Kevin Deramus**

1875 Hwy. 290 W  
Brenham, TX 77833  
979-277-6267

Created in 1979, Washington County Emergency Medical Service is licensed by the Texas Department of State Health Services. Our service covers a geographical area of approximately 700 square miles. With two major bodies of water within our service area, the Brazos River bordering the eastern boundary of the county and Lake Somerville, these waterways bring nearly a 1 million visitors a year to the area.

Washington County is a true 3<sup>rd</sup> Service Model EMS Department, completely separate from the Police and Fire Departments. We believe this type of system allows for the most efficient and adequate public safety EMS Department for the community. This model ensures quality EMS professionals and competency in an EMS system dedicated solely to pre-hospital care of the sick and injured. The department believes in maintaining a comprehensive system capable of handling 911 calls, Emergency Transfers, Critical Care Services, Non-emergency transfers and even Rescue Paramedic Services to the visitors and residents of Washington County.

Washington County believes we will never be greater than our vision and these philosophies must be taught and enforced daily. Through our steadfast values, professionalism, and clinical competency of our employees, we truly believe our community will see us as the public servants we are as paramedics. Washington County EMS has a fully developed special operation paramedic program that trains rescue paramedics for Land, Water, and Tactical EMS situations. The Department has been a longstanding deployable partner of the Texas Task Force Water Rescue Division and takes an enormous amount of pride in the SOD Division. The department utilizes several innovative programs to improve patient care. The newly developed community paramedicine model (ACP program) has proven to gain national attention in the way it improves overall department efficiency.

The department is currently made up of 30 field staff paramedics, 1 Captain of Operations, 1 Compliance Captain, EMS Administrative Assistant and the EMS Director.

### **EMS Directors -**

Ron Haussecker	1979 - July, 2005
Kevin Deramus	August, 2005 – present

## COUNTY ENGINEER



### **Wesley Stolz**

Road & Bridge Department  
3650 Hwy. 36 North  
Brenham, TX 77833  
979-277-6275

The County Engineer oversees a department with 28 full time employees. The R&B road crews provide maintenance for all of the 625 miles of Washington County roads. The road crew duties include: grading approximately 190 miles of gravel roads, rebuilding existing roads for seal coat (paving), preventative maintenance seal coats on existing paved roads, installation and maintenance of road signs and striping, patching potholes on county roads, trimming brush and mowing in the county right-of-way, installation of roadway and driveway culverts, cleaning drainage ditches and maintenance of 120 county bridges. Additionally, the department reviews proposed subdivision plats and variance requests, utility permits, driveway permits, makes the 911 address signs and inspects the construction of any proposed subdivision roads to be dedicated to the county.

### **County Engineers:**

Don Werth - 2012 - April 20, 2018  
Ross McCall - July 1, 2018 – December, 2021  
Wesley Stolz – February, 2022 - present

### **Road & Bridge Administrators:**

John Nall	1971 – 1981
Johnnie Schroeder	1982 - 1987
Erwin Sander	1987 - 2011

# EMERGENCY MANAGEMENT COORDINATOR



## **Bryan Ruemke**

1875 Hwy. 290 W  
Brenham, TX 77833  
979-277-6267

- Maintains County emergency management operations plan and annexes.
- Manages inventory of homeland security grant equipment. Maintains records.
- Manages NIMS Requirements Accountability for the County Departments.
- Assists in annual budget preparation.
- Prepares administrative reports.
- Oversees grants and grant reporting requirements.
- Researches and makes recommendations for future grant opportunities.
- Serves as a liaison and works with other agencies in developing operational plans for emergencies.
- Attends various meetings with Local, State, and Federal agencies.
- Responds to Emergency Operations Center when notified of emergency conditions.
- Attends training programs, including required and optional courses.
- Provides emergency management training to departments and other agencies.
- Performs other job-related duties as assigned.

- |                     |  |
|---------------------|--|
| December 12, 1983 - | Formed by action of the Commissioners' Court.  |
|                     | Emergency Management Plan approved.  |
| December 30, 1991 - | Revised Emergency Management plan presented  |
| August 23, 1993 -   | Annex D Radiological Protection Plan amended to the Emergency Management Plan.                             |
| April 23, 1996 -    | Amended the Emergency Management Plan.   |
| January 13, 2004 -  | Mutual aid established between Brazos, Burleson, Grimes, Leon, Madison, Robertson and Washington Counties. |
| March, 2008 -       | Established office space for the Coordinator at the Expo.  |

### **Coordinators:**

Ron Haussecker	1979 - 1990
Dennis Mitterlehner	1991 - 2003
Stephen Draehn/Ricky Boeker	2003 - 2007
Robert Smith	2008 - 2014
Kevin Deramus(EMS Dir.)	2014 - 2015
Bryan Ruemke	2015 - present

# Election Administrator



## **Carol Jackson**

100 E. Main, Suite 105  
Brenham, TX 77833  
979-277-6200 ext. 5312

The Elections Administrator is a county-appointed official who works directly with the Secretary of State, the state's chief election officer, to perform duties regarding the elections and voter registration structural process.

The Washington County Commissioner's Court created the position of Elections Administrator for Washington County effective September 1, 2021. The County Election Commission appoints the Elections Administrator.

The County Election Commission consists of:

1. the county judge, as chair;
2. the county clerk as vice chair;
3. the county tax assessor-collector as secretary; and
4. the county chair of each political party

The affirmative vote of a majority of the commission's membership is necessary to appoint an administrator.

The Elections Administrator is responsible for the conduct of all Federal, State, and County Elections. Elections must comply with state and federal laws to ensure election results are accurately reported and promote transparency in the voting process. On behalf of the County, the EA may contract and supervise the elections of other political subdivisions.

The Elections Administrator, also serves as a County Voter Registrar, who assists residents of the County in becoming registered voters. The Voter Registrar also maintains the voter registration records and monitors voter registration activities, in compliance with state and federal laws.

A County Elections Administrator commits an offense if the administrator makes a political contribution or political expenditure, as defined by the law regulating political funds and campaigns, or publicly supports or opposes a candidate for public office or a measure to vote on at an election.

## Information Technology



### **Terrance (T. J.) Harris**

100 E. Main  
Brenham, TX 77833  
979-277-6200

The Information Technology Department provides computer support services to Washington County's elected officials, department heads and employees. This includes 911 dispatch, EMS and the Sheriff's department.

The department maintains upwards of 250 computers, servers and mobile devices combined throughout the County.

This department was established by Commissioners' Court in 2014.

### **Director:**

Jerry Harris  
T. J. Harris

2015 – May, 2019  
September, 2019 – present



# 911

We serve as the Primary Public Safety Answering Point (PSAP) for Police, Fire and EMS for Washington County and the City of Brenham. We answer 911 and non-emergency (NE) calls and dispatch for Brenham Police, Brenham Fire, Washington County Sheriff's Department, Blinn College Police, Washington County EMS ground and air ambulances, Washington County Constables, Justice of the Peace, Texas Department of Public Safety Troopers, Texas Parks and Wildlife, Animal Control, Emergency Management and 10 volunteer Fire Departments.

We handle approximately 30,000 911 calls per year, or between 90-110 calls every day. We dispatch on more than 100,000 calls per year or approximately 300 calls per day including officer-initiated calls.

Grade of Service (GOS) is the percentage of incoming calls that are answered in less than 15 seconds. NENA standard states 90% GOS is most desirable. The E911 Communications Center is answering 99% of 911 calls in less than 10 seconds.

TCIC/NCIC: The Telecommunicators are connected with various state, federal and international systems as they check for wanted and missing persons as well as missing and stolen vehicles and property. Last year the TCOs ran and reviewed 93,966 inquiries.

We process more than 2,000 Criminal Histories each year.

Validations: We are the record holder for all entries and validate those records each month. Each wanted person, missing person, stolen articles, guns, vehicles and boats must be validated each year to ensure the records are valid.

We are an enhanced Phase II 911 system meaning we can pinpoint your location if you are calling from a cellular phone. The initial information is based on the tower that your call hit, then a few seconds later we receive Phase II which can show your location within a few meters.

We also have the ability to get very accurate location information using Citizen Input (CI) in the event a person was lost and didn't know where they were. We could send them a text and if they accept, we could then see the location much like "find my iPhone". We can also see what they are seeing on their phone camera- useful in a hostage situation. We tell callers if they are in an emergency and cannot talk, to set the phone down - don't hang it up so 911 can hear what is happening, with CI we can also see what is happening.

We can accept text to 911, we ask that you "call when you can and text when you can't".

## **Director:**

Nathan Preston	2015 – September, 2016
Kristy Taylor Thomas (Interim Director)	September – December, 2016
Kristi Stamnes	2017 – 2021
Robyn Hood	2022 – 2024

## EXPO Director



### **Harrison Williams**

1305 E. Blue Bell Rd.  
Brenham, TX 77833  
979-836-2299

The Expo is located on Blue Bell Road (also known as FM 577), between highways 36 and 105 on 50 acres. You'll find lots of ample parking and facilities. The Expo offers a variety of buildings throughout the year for rental. The Expo averages 400 rentals each year.

Our grounds are available for different functions, such as -

- Arts and Crafts Shows
- Banquets
- Cattle Events
- Dances
- Display Show
- Hog Events
- Horse Events
- Meetings
- Other Livestock and Poultry events
- Wedding Events
- Reunions
- Swap Meets

Each year in September, the Expo hosts the annual Washington County Fair, which is the oldest County Fair in Texas.

# Environmental Health Department



## Mark Marzahn

100 W. Main, Suite 100  
Brenham, TX 77833  
979-277-6290  
979-277-6291 (fax)

### **The Environmental Health Department administers the following county programs:**

---

#### **On-Site Sewage Facility (Septic System) Permitting** (throughout Washington County).

All new, altered, repaired, or enlarged septic systems require a permit before work begins, regardless of acreage.

---

#### **Floodplain Determination/Floodplain Development Permitting** (for property located in the unincorporated areas of Washington County).

Because Washington County participates in the National Flood Insurance Program, all development within the floodplain requires a permit and authorization before construction begins. Development and construction that occurs outside of the floodplain does not require a floodplain development permit.

#### **Code Enforcement (throughout unincorporated areas of Washington County)**

This office works to enforce a number of state and local laws concerning illegal waste dumping, outdoor burning, junk vehicles, dilapidated structures and other public nuisances.

---

#### **Prescribed Burn Permitting** (throughout the unincorporated areas of Washington County).

Prescribed Burn Permits are required only when a Burn Ban is in effect.

Prescribed burns that occur when there is not a burn ban do not require a permit.

The Brazos River Authority began issuing septic permits around Lake Somerville in 1973. Washington County began issuing septic permits in 1982, with permits issued by Gus Foerster. The department was formally established in 1997, with an office in the Courthouse. Currently the office is in the Courthouse Annex. Brazos River Authority relinquished their Septic System Program around Lake Somerville in 2004 and transferred their records to Washington County.

**Environmental Supervisors:** Webster Hart 1997 - 2006      Mark Marzahn 2007 – present

## Human Resources



### **Angela Mlcak, Director**

105 W. Main Street, Suite 101  
Brenham, TX 77833  
979-277-6236

The Human Resources Department consists of a Director, Payroll Specialist and HR Generalist and provides a full range of Human Resource (HR) support to elected officials, appointed department heads, supervisors, and employees of Washington County. The department offers a full range of services to over 320 county employees. These services include recruitment, employee training and evaluation, position management, employee relations and benefit administration. The HR Department maintains a position available page on the county website to help job seekers.

The HR department is responsible for all federal, state and local compliance and reporting, with regard to county employment.

More information is available at [www.co.washington.tx.us](http://www.co.washington.tx.us).

Prior to 2008, HR duties were performed by the County Treasurer's office. This department was established by Commissioners' Court action in August, 2008. It was originally called the Personnel and Benefits Office. Commissioners' Court changed the name to Human Resources in 2013.

### **Co-Administrators Director**

Suzy Blakey & Mary Sklar  
Darrell Reimer  
Dr. Teresa Sazedj  
Angela Mlcak

2008-2012  
2012 - January, 2021  
January, 2021 – June, 2022  
October 2022 -

# Addressing

## **Aaron Harmon, Coordinator**

3650 Hwy. 36 North  
Brenham, TX 77833  
979-277-6281

This office assigns physical addresses to any property in Washington County that is not within the incorporated cities of Brenham or Burton.

Also responsible for the digital mapping data for the County and the City of Burton, and for all roads in the County and the two cities. Assists the two cities with any address assignments or changes.

Other duties include updating all information for the County and two cities in the State 9-1-1

Database, including Fire Department, EMS and Phone District information. GIS needs for the Road & Bridge Department are also performed through this office.

Coordinates addressing for the County and two Cities with the Post Offices, Appraisal District, utility companies, and other county offices such as Elections and Environmental.

Assists the Commissioner's Court with subdivision and road name approvals. Liaison with the U.S. Census Bureau, and assists with Precinct Redistricting.

This office was established in 1993. Brenham Route 2 received their new 9-1-1 addresses in 1994, followed by the other 10 Brenham postal routes, 2 Burton routes and routes in Carmine, Ledbetter, Chappell Hill, Washington and Navasota, completed in 2000.

### **Coordinator:**

Cheryl Lewer

Kristi Stamnes - Interim (E911 Director)

Damon Cunningham

John Murrell

Aaron Harmon

1993 – January, 2019

February, 2019 – May 19, 2019

May 20, 2019 – August, 2022

August, 2022 – December 2022

2023 -

## Facilities Maintenance



**Bobby Branham**, Supervisor  
100 E. Main  
Brenham, TX 77833  
979-277-6200

Bobby Branham joined the Washington County Maintenance Department in 2018.

He is responsible for the upkeep of the Courthouse, Courthouse Annex, Probation office, Washington County Health Center, District Attorney's office, Washington County 9-1-1 building, Road & Bridge office, EMS building, Justice of the Peace offices, and Courthouse grounds.

He oversees all heating and air conditioning units, plumbing and electrical systems, and any repairs necessary to these county owned buildings.

## Adult Probation

Washington County Community Supervision & Corrections Department



**Gretchen Vogler, Manager**  
107 West Main Street  
Brenham, Texas 77833  
979) 277-6240  
Fax (979) 277-6287

The Washington County Community Supervision and Corrections Department provides Adult Probation services to over 800 offenders in Washington County.

Under the direction of Donna Damon, Director, the 21<sup>st</sup>, 335<sup>th</sup> and the 423<sup>rd</sup> Judicial Districts, and the County Court at Law, we enhance the public's safety by enforcing the orders of the Court related to adult offenders and to provide the Court with a continuum of progressive sanctions which provide effective risk control management for offenders.

The Department also assists offenders in making pro-social changes in their behavior by providing a variety of evidence-based programs and services designed to reduce the impact of crime in Washington County.

## Juvenile Probation

**JASON BENDER**, Chief JPO

108 S. Park  
Brenham, TX 77833  
979-277-6245

The Cen-Tex Regional Juvenile Services Department provides services to youth who come under the jurisdiction of the Juvenile Court in Bastrop, Burleson, Lee and Washington Counties. The department provides community-based programming such as individual and group substance abuse, mental health counseling, anger management and sex offender treatment. Youth are also given substance abuse screening and psychological testing if needed. The department also provides specialized supervision including Intensive Supervision Probation and electronic monitoring. Some youth are placed outside their homes and community depending on their lack of success in the community based programs and/or of their offense makes them a danger to their community. Funding to support these services for youth are provided by a combination of county, state, and federal funding including grant and special program funding.

Juvenile Detention is another element of probation services where children are confined by the Juvenile Court for short periods of time while awaiting assessment and placement in an alternative placement outside the home or commitment to the Texas Juvenile Justice Department. The youth follow a daily schedule that includes academic education, physical education, family visitation, facility cleaning, counseling, health services and religious services. Youth are confined 24 hours a day 7 days a week, until they are brought back in front of the Juvenile Court. The department contracts with Milam County, Hays County and Guadalupe County to provide detention services for the four counties.

All aspects of juvenile probation services fall under the authority of the Juvenile Board made up of District Judges, County Judges and County Court at Law Judges of Bastrop, Burleson, Lee and Washington County.



## Extension Service



### **Kara Matheney**

County Extension Agent  
1305 E. Blue Bell Road  
Brenham, TX 77833  
979-277-6212

Extension is an educational organization provided by the Smith-Lever Act of 1914, which expanded the land-grant mission to include educational outreach to research stations, local communities and farms across the nation. Through the support from local county governments, Extension serves every county in Texas, from the biggest to the smallest with 250 offices and 1,400 personnel.

Extension agents and county staff rely on program area committees made up of local county residence to help them identify issues, implement education, and evaluate programming efforts for the county they serve. The direct connection to research stations across Texas and to Texas A & M University allows agents to provide quality, relevant, research-based, non-biased outreach and continuing education programs and services to the people of their counties and Texas.

**Agriculture and Natural Resources** - Washington County agriculture has deep roots in the cow-calf industry and offers a great platform for excellent programs to address issues related to forage management, cattle production, weed and brush control and many others. Additionally, pecan production, vegetable gardening, fruit tree production and landscape management are all areas of great interest and are commonly identified by program area committees as program topics for the benefit of Washington County residents. From cattle to horticulture, wildlife to water, turf grass to tree care, the Washington County Extension Office is pleased to provide educational assistance to local residents.

**The Family and Consumer Sciences** - discipline of Extension offers practical information for families. Topics help with the overall well-being of our community. Programming efforts in Washington County include education on childhood obesity, food safety: Food Handler Certification and Food Manager Certification, health and wellness education, money management, parenting, child care provider education, child passenger education and fitting station for car seats, family resource management and FCS 4-H youth projects.

**4-H** - is a youth development program to develop youth through the involvement of parents, other adults, and volunteers who organize and conduct learning experiences for youth in a community setting. The 4-H program aims to build future leaders through a series of education programs including livestock production, food and nutrition, various judging teams, public speaking, photography and more. Interested youth can become involved in one of the eight community clubs stretching across Washington County and help make the best better!

### **Sources for this booklet:**

U.S. Census data

## **Sources**

1915 Soil Survey of Washington County, Texas  
Election Records of Washington County  
Bond Records of Washington County  
Commissioners' Court Minutes of Washington County  
Washington County Auditor's office  
*History of Brenham* by Mrs. R. E. Pennington  
Brenham Banner Press  
Texas State Historical Association  
Texas Association of Counties  
Texas General Land Office  
Elected and Appointed office holders and Department Heads of Washington County

***History of Officeholders***

*History  
of  
Office Holders*

*1837 - present*

## COUNTY JUDGE -

1	John P. Coles	1837 - 1839
2	Dan J. Toler	1839 - 1841
3	William H. Ewing	1841 - 1846
4	Nimrod P. Chappell	1846 - 1848
5	Joseph Portis	1848 - 1849
6	William A. Higgins	1850 - 1855
7	Claudius Buster	1855 - 1858
8	E. D. Tarver	1858 - 1862
9	O. H. P. Garrett	1862 - 1867
10	F. P. Wood	1868 - 1870
	F. A. Hackworth	
11	(policecourt)	1871 - 1876
12	D. B. McFarland	1876
13	H. E. Williams	1877 - 1878
14	J. D. McAdoo	1878 - 1883
15	C. R. Breedlove	1883 - 1884
16	Lafayette Kirk	1884 - 1892
17	E. P. Curry	1892 - 1908
18	W. R. Ewing	1908 - 1920
19	J. H. Chappell	1921 - 1926
20	Sam D. W. Low	1927 - 1940
21	Richard Spinn	1941 - 1954
		1955 - July,
22	Odis Tomachefsky	1976
		July, 1976 -
23	Gus F. Mutscher	1990
24	Dorothy Morgan	1991 - 2010
25	John Brieden	2011 - 2018
26	John Durrenberger	2019 -

### ***Special County Judge (for criminal court)***

C. C. Garrett	1881
J. C. Muse	1882
J. T. Swearingen	1883
C. C. Garrett	1883

## County Commissioners –

There are no records from 1836 – 1845 of the Commissioners who held office.

While it appears that there were four Commissioners elected during the period of 1846 - 1882, there is no designation of precinct number.

During the period of 1870 -1875, a Police Court, rather than a Commissioners' Court served as the governing body. During that time, the County Judge presided with the Justices of the Peace attending.

J. L. Farquhar	1846	Josiah Foster	1856
Green Coleman	1846	Joseph Wallis/Ervin Brown	1856
William Smith	1846	Stephen R. Roberts	1856
William H. Hargrove	1846	John S. Jones	1856
Francis H. Smiley	1847	Stephen R. Roberts	1857
J. L. Farquhar	1847	John S. Jones	1857
William Smith	1847	Ervin Brown	1857
William H. Hargrove	1847	Josiah Foster	1857
Williamson Price	1848	Stephen R. Roberts	1858
James H. Tom	1848	John S. Jones	1858
Hardin White	1848	Ervin Brown	1858
William Smith	1848	Josiah Foster	1858
Hardin White	1849	Thomas M. Barton	1859
William Smith	1849	William E. Allcorn	1859
Williamson Price	1849	O. H. P. Garrett	1859
Joseph Ralston	1849	James Gray	1859
James R. Hines	1850	Thomas M. Barton	1860
Williamson Price	1850	Campbell Longley	1860
Hardin White	1850	James Gray	1860
John S. Jones	1850	O. H. P. Garrett	1860
James R. Hines	1851	George J. Duncan	1861
John C. Crenshaw	1851	O. H. P. Garrett	1861
Hardin White	1851	E. A. Harris	1861
John S. Jones	1851	James Gray	1861
		George J. Duncan/F. W. McGuire	1862
John S. Jones	1852	O. H. P. Garrett/E. D. Tarver	1862
James R. Hines	1852	E. A. Harris/John H. Lauderdale	1862
John C. Crenshaw	1852	Gabriel Felder	1862
Hardin White	1852		
John S. Jones	1853	E. D. Tarver	1863
George W. Horton	1853	John H. Lauderdale	1863
Claudius Buster	1853	Gabriel Felder	1863
John A. Heiskell	1853	F. W. McGuire	1863
Claudius Buster	1854	W. H. McCutchin	1864
John Sayles	1854	Gabriel Felder	1864
John A. Heiskell	1854	John H. Lauderdale	1864
John S. Jones	1854	E. D. Tarver	1864
John Sayles	1855	James R. Hines	1865
W. P. Rutledge	1855	E. D. Tarver	1865
James Lane	1855	John H. Lauderdale	1865
Joseph Wallis	1855	J. L. Farquhar	1865

Aron Whitener	1866	D. G. Bowers	1878
Ira Clemons	1866	J. C. Cain	1878
J. L. Farquhar	1866	R. J. Moore	1878
N. Kavanaugh	1866	Geo. W. Breedlove	1878
A. G. Haynes	1867	J. C. Cain	1879
J. L. Farquhar	1867	R. J. Moore	1879
N. Kavanaugh	1867	Thomas Phears	1879
John Young	1867	J. F. Winkelmann	1879
A. G. Haynes	1868	J. C. Cain	1880
John Young	1868	R. J. Moore	1880
N. Kavanaugh	1868	Thomas Phears	1880
J. L. Farquhar	1868	J. F. Winkelmann	1880
N. Kavanaugh/T. J. Lockett	1869	J. C. Cain	1881
J. L. Farquhar/M. F. Alexander	1869	Thomas Phears	1881
A. G. Haynes	1869	J. F. Winkelmann	1881
Ira Clemons	1869	W. H. Blount (prec. 1)	1881
T. J. Lockett	1870		
Ira Clemons	1870		
M. F. Alexander	1870		

#### 1870 - 1875

##### Notation in Court records:

**"County business was transacted under the provisions of G O No. 74 hdqrtrs 5 Military District"**

During this time, it appears that the Justices of the Peace attended Police Court(Commissioners' Court) in lieu of any commissioners

D. G. Bowers	1876
J. C. Cain	1876
R. J. Moore	1876
Geo. W. Breedlove	1876
D. G. Bowers	1877
J. C. Cain	1877
R. J. Moore	1877
Geo. W. Breedlove	1877

**Commissioner - Precinct 1**

W. H. Blount	1881 -1884
D. D. Bolton	1884 - 1886
George W. Brown	1886 - 1890
Julius Coleman	1890 - 1892
J. J. Booker	1892 - 1898
William Johnson	1898 - 1904
William H. Buck	1904 - 1908
S. S. Bolton	1908 -1910
Henry Wehmeyer	1910 - 1912
W. H. Buck	1912 - 1914
J. W. George	1914 - 1916
A. Bosse	1916 - 1918
E. C. Hughes	1918 - 1922
A. C. Krueger	1923 - 1924
H. C. Lehde	1925 - 1932
A. W. Hartstack	1933 - 1944
Joe E. Bailey	1945 - 1962
John Sommer	1963 - 1966
J. W. Whiddon	1967 - 1968
John Sommer	1969 - 1980
Nolan Schroeder	1981 - 1984
Joe Renn	1985 - 1992
David Simpson	1993 - 2001
Lloyd Bearden	2002 - 2004
Zeb Heckmann	2005 – 2016
Don Koester	2017 – 2024
Misti Hartstack Corn	2025 -

**Commissioner - Precinct 2**

H. H. Knoxson	1882 -1885
R. K. Felder	1885 - 1890
R. B. Johnson	1890 - 1892
T. A. Mercer	1892 - 1894
P. A. Raysor	1894 - 1900
W. H. Crawford	1900 - 1906
Jack R. Routt	1906 - 1944
J. W. Whiddon	1945 - 1974
Robert E. Gaskamp	1975 - 1982
Alois Bilski	1983 - 1986
Rudolph Schroeder	1987 - 1994
Robert Mikeska	1995 - 2006
Don Ahrens	2007 - 2010
Luther Hueske	2011 - 2018
Candice Bullock	2019 -

**Commissioner - Precinct 3**

Henry Hodde	1882 - 1886
E. J. Reichardt	1886 - 1890
Edward Amsler	1890 - 1897
John R. Pennington	1897 - 1908
A. C. Dever	1908 - 1909
N. E. Dever	1909 - 1914
A. A. Hacker	1914 - 1916
Ed Amsler	1916 - 1920
W. J. Burnes	1921 - 1928
Louis R. Lehrmann	1929 - 1956
Robert F. Schroeder	1957 - 1966
Walter Harmel	1967 - 1968
Robert F. Schroeder	1969 - 1972
Leroy Schroeder	1973 - 1980
Reuben C. Kelm	1981 - 1984
Gilbert Janner	1985 - 1996
Alfred Boeker, Jr.	1997 – Feb. 10, 2002
Joyce Boeker	Feb. 22, 2002 - 2004
Kirk Hanath	2005 -

**Commissioner - Precinct 4**

William Wedemeyer	1882 -1884
Thomas Phears	1884 - 1886
William Holle	1886 - 1888
E. J. Neinast	1888 - 1890
G. A. Broesche	1890 - 1908
Wayne Blackburn	1908 - 1909
H. M. Bryan	1909 - 1910
Wayne Blackburn	1910 - 1914
William Turner	1914 - 1920
H. G. Klatt	1921 - 1924
T. R. Fincher	1925 - 1936
Roscoe Fincher	1937 - 1938
T. R. Fincher	1939 - 1940
Roscoe Fincher	1941 - 1942
T. R. Fincher	1943 - 1944
Herman G. Weber	1945 - 1950
Walter Harmel	1951 - 1974
Weldon Matthies	1975 - 1986
Garrett Spitzer	1987 - 1988
Walter "Boots" Guelker	1989 - 1990
Paul Pipes	1991 - 1998
Joy Fuchs	1999 – 2022
Dustin Majewski	2023 -



## **County Attorney**

<b>1</b>	Walker Wheeler	1868 -1869
<b>2</b>	J. T. Swearingen	1869 - 1882
<b>3</b>	Albert G. Haynes	1882 - 1883
<b>4</b>	Lafayette Kirk	1883 - 1884
<b>5</b>	J. C. Muse	1884
<b>6</b>	Ben S. Rogers	1884 - 1892
<b>7</b>	J. P. Buchanan	1892 -1899
<b>8</b>	R. E. Pennington	1899 - 1900
<b>9</b>	W. R. Ewing	1900 - 1908
<b>10</b>	L. E. Rasberry	1908 - 1922
<b>11</b>	W. H. Bouldin	1923 - 1924
<b>12</b>	Albert Stone	1925 - 1930
<b>13</b>	W. H. Bouldin	1931 - 1934
<b>14</b>	Richard Spinn	1935 - 1940
<b>15</b>	Julian E. Weisler	1941 - 1948
<b>16</b>	Odis Tomachefsky	1949 - 1954
<b>17</b>	William J. Ehlert	1955 - 1964
<b>18</b>	A. W. Hodde, Jr.	1965 - 1970
<b>19</b>	Milton Y. Tate, Jr.	1971 - 1974
<b>20</b>	Louis John Lacina, Jr.	1975 - 1988
<b>21</b>	James Reese Jones	1989 - 1992
<b>22</b>	Craig P. Lesser	1993 - 1996
<b>23</b>	Renee Mueller	1997 - 2000
<b>24</b>	Julie L. Renken	2001 - 2012
<b>25</b>	Renee Mueller	2013 -

## **District** **Clerk**

<b>1</b>	Thomas P. Shapart	1837 - 1841
<b>2</b>	J. D. Giddings	1841 - 1848
<b>3</b>	Dawson D. Crumpler	1848 - 1854
<b>4</b>	William F. Jarrell	1854 - 1862
<b>5</b>	Alexander Campbell	1862 - 1865
<b>6</b>	D. C. McIntyre	1865 - 1866
<b>7</b>	Alex Campbell	1866 - 1867
<b>8</b>	J. J. Stockbridge	1867 - 1869
<b>9</b>	Charles C. Williams	1869 - 1870
<b>10</b>	J. J. Stockbridge	1870 - 1872
<b>11</b>	T. T. Alexander	1872 - 1873
<b>12</b>	R. A. Harvin	1873 - 1881
<b>13</b>	J. H. Moore	1881 - 1882
<b>14</b>	A. W. Gilder	1882 - 1886
<b>15</b>	C. F. Herbst	1886 - 1890
<b>16</b>	A. M. Krug	1890 - 1907
<b>17</b>	R. V. Hoffmann	1907 - 1914
<b>18</b>	W. H. Bouldin	1914 - 1920
	A. J. Wendt	
<b>19</b>	(appointed)	1920 - 1934
<b>20</b>	Paul Klingsporn	1935 - 1966
<b>21</b>	Otto R. Beckendorf	1967 - 1984
<b>22</b>	Blondean Kuecker	1985 - 1998
<b>23</b>	Vicki Lehmann	1999 – March 31, 2012
<b>24</b>	Tammy Brauner	April 1, 2012 – 2024
<b>25</b>	Suzette Blakey	2024
<b>26</b>	Kimberley Boyce	Dec 3, 2024 -

## **County Clerk**

<b>1</b>	Robert Merritt	1837 - 1845
<b>2</b>	John Gray	1845 - 1847
<b>3</b>	Sam Lusk	1847 - 1858
<b>4</b>	S. S. Hosea	1858 - 1865
<b>5</b>	John A. Randle	1865 - 1866
<b>6</b>	S. S. Hosea	1866 - 1867
<b>7</b>	James E. Edward (apptd. by Brigadier General)	1867
<b>8</b>	John Welch	1868 - 1869
<b>9</b>	Charles C. Williams	1870 - 1873
<b>10</b>	R. A. Harvin	1874 - 1876
<b>11</b>	Hugh M. Lewis	1876 - 1890
<b>12</b>	O. A. Seward	1890 - 1910
<b>13</b>	Green Morgan	1911 - 1924
<b>14</b>	C. B. Thompson	1925 - 1934
<b>15</b>	Travis Phillips	1935 - 1950
<b>16</b>	Charles E. Wiede	1951 - 1974
<b>17</b>	Gertrude Lehrmann	1975 - 1994
<b>18</b>	Beth A. Rothermel	1995 – 3/28/2025
<b>19</b>	Nicholas Prenzler	3/28/2025 -

## **Sheriff**

<b>1</b>	Robert Stevenson	1837 - 1841
<b>2</b>	Joseph P. Lynch	1841
<b>3</b>	William H. Chaus	1841 - 1843
<b>4</b>	Can R. Irion	1843 - 1845
<b>5</b>	James W. McDade	1845 - 1850
<b>6</b>	John H. Day	1850 - 1854
<b>7</b>	James L. Dallas	1854 - 1858
<b>8</b>	Parrott W. McNeese	1858 - 1862
<b>9</b>	G. M. Buchanan	1862 - 1865
<b>10</b>	M. A. Healy	1862
<b>11</b>	J. H. Stephens	1862 - 1866
<b>12</b>	Thomas A. Baber	1866 - 1869
<b>13</b>	Matthew Bullock	1869 - 1870
<b>14</b>	Lyddleton Smith	1870 - 1880
<b>15</b>	J. H. Hutchinson	1880 - 1882
<b>16</b>	J. L. Moore	1882 - 1884
<b>17</b>	N. E. Dever	1884 - 1890
<b>18</b>	D. E. Teague	1890 - 1914
<b>19</b>	Burney Parker	1914 - 1922
<b>20</b>	Hoffmann Reese	1925 - 1940
<b>21</b>	Tieman H. Dippel	1941 - 1960
<b>22</b>	Johnie Schulte	1961 - 1976
<b>23</b>	Elwood Goldberg	1977 - 1986
<b>24</b>	Billy Rosenbaum	1987 - 1992
<b>25</b>	J. W. Jankowski	1993 - 2012
<b>26</b>	Otto Hanak	2013 – 2024
<b>27</b>	George D. "Trey" Holleway III	2025 -

## **Tax** **Assessor/Collector**

<b>1</b>	William L. Foster	1837 - 1838
<b>2</b>	James Eden	1838 - 1842
<b>3</b>	Edward H. Winfield	1842 - 1844
<b>4</b>	Dawson D. Crumpler	1844 - 1845
<b>5</b>	John A. McDade	1845 - 1846
<b>6</b>	Elisha D. Little	1846 - 1852
<b>7</b>	William Norris	1852 - 1854
<b>8</b>	John H. Day	1854 - 1861
<b>9</b>	Terrell A. Jackson	1861 - 1862
<b>10</b>	William C. Lewis	1862 - 1865
<b>11</b>	William S. Mallett	1865 - 1866
<b>12</b>	John C. Harris	1866 - 1869
<b>13</b>	B. J. Arnold	1869 - 1882
<b>14</b>	Richard A. Harvin	1882
<b>15</b>	Marcus Amsler	1882 - 1884
<b>16</b>	Samuel Schlenker	1884 - 1908
<b>17</b>	F. H. Bosse	1908 - 1914
<b>18</b>	R. V. Hoffmann	1914 - 1932
<b>19</b>	Robert J. Schawe	1936 - 1956
<b>20</b>	Henry Appel	1957 - 1976
<b>21</b>	Vennie Herzog	1977 - 1992
<b>22</b>	Rita Jezierski	1993 - 1996
<b>23</b>	Gertrude Lehrmann	1996 - 1997
<b>24</b>	Candy Arth	1997 - 2007
<b>25</b>	Carol Foster (appointed)	2007 - 2008
<b>26</b>	Dot Borchardt	2009 - 2020
<b>27</b>	Cheryl Tesch Gaskamp	2021 -

## **Treasurer**

<b>1</b>	J. D. Giddings	1844 - 1846
<b>2</b>	L. Gilbert	1846 - 1847
<b>3</b>	W. A. Higgins	1847 - 1850
<b>4</b>	Hugh C. McIntyre	1850 - 1856
<b>5</b>	George W. Horton	1856 - 1865
<b>6</b>	J. J. Armbrister	1865 - 1866
<b>7</b>	William C. Lewis	1866 - 1867
<b>8</b>	C. Witteburg (apptd by Gen. J.J.Reynolds)	1867 - 1870
<b>9</b>	Edward T. Randle	1870 - 1871
<b>10</b>	C. W. Klaeden	1871 - 1872
<b>11</b>	Henry E. Lockett	1872 - 1873
<b>12</b>	Thomas J. Lockett	1873 - 1882
<b>13</b>	C. C. Lieb	1882 - 1884
<b>14</b>	C. Minkwitz	1884 - 1895
<b>15</b>	Charles F. Herbst	1895 - 1903
<b>16</b>	William Wendt	1903 - 1908
<b>17</b>	Burney Parker	1908 - 1914
<b>18</b>	Charles H. Muegge	1914 - 1918
<b>19</b>	Sophie Heine	1918 - 1936
<b>20</b>	William J. Schmidt	1937 - 1948
<b>21</b>	Rosa Lea Fuchs	1949 - 1990
<b>22</b>	Norman Draehn	1991 - 2010
<b>23</b>	J. Stephen Miller (appointed)	2010
<b>24</b>	Peggy Kramer	2011 -

## **JUSTICES OF THE PEACE**

It should be noted that, with regard to the Justices of the Peace, the first listing has no precinct number, but rather a name-of-precinct designation.

There is reference to two or more Justices being elected from a precinct in the early years of the County. At time of printing, we were unable to find anything to definitively confirm why more than one was elected per precinct.

Likewise, there is also a span of time, where the County had up to 8 precincts.

There is also a list of Justices with no precinct designation. We were unable to determine which precinct they served.

### **Justice of the Peace**

-

### **Hazard Precinct**

Gideon Walker	1837
John Beauchamp	1837

### **Justice of the Peace - Washington Precinct**

Ephraim Roddy	1837 - ?
Stephen R. Roberts	1837 - ?
Joseph H. Wood	1839 - ?
William H. Ewing	1840 - ?
William P. Rutledge	1843 - ?
Stephen R. Roberts	1848 - ?

### **Justice of the Peace**

-

### **Hidalgo Precinct**

James G. Swisher	1837 - ?
Shubal Marsh	1837 - ?
Lewis Bond	1839 - ?

### **Justice of the Peace - Lake Creek Precinct**

George Galbraith	1837 - ?
Jerimiah Washam	1837 - ?

**Justice of the Peace**  
**-**  
**San Jacinto**  
**Precinct**

William Robert	1837 - ?
William Robinson	1837 - ?

**Justice of the**  
**Peace -**  
**Independence**  
**Prec. 2**

J. C. Smiley	1839 - ?
William C. Wilson	1840 - ?
Earl Pierce	1842 - ?
Moses Park	1843 - ?
John M. McKnight	1848 - ?
James P. Hines	1848 - ?
William McDowell	1850 - ?
John Alexander	1856 - ?
Asbury Daniels	1858 - ?
Thomas B. Haynes	1858 - ?
Sam Stephens	1858 - ?
Asbury Daniel	1866 - ?

**Justice of the**  
**Peace -**

**Concord Precinct**

G. H. Coleman & A. T. Kerr	1840 - ?
----------------------------	----------

**Justice of the**  
**Peace -**  
**Walker Precinct**

N. A. McFaden	1840 - ?
George Chappell	1840 - ?

**Justice of the**  
**Peace -**  
**Brenham Precinct**

Thomas T. Hailey	1863 - ?
------------------	----------

**Justice of the**  
**Peace -**

**Viesca Precinct**

Hugh McGuffin	1837 - ?
Joseph L. Bennett	1837 - ?

**Justice of the**  
**Peace -**  
**Mill Creek**  
**Precinct**

Mr. East & Mr. Byrne	1840 - ?
John B. Dupuy	1841 - ?

**Justice of the**  
**Peace -**  
**Liberty Precinct**

L. Gilbert	1842 - ?
------------	----------



## **Justice of the Peace**

**-**

### **Union Hill Precinct**

A. J. Blackburn	1860 - 1863
D. E. Whetstone	1863 - ?

### **Justice of the Peace - Precinct 1**

James L. Farquhar	1846 - 1854
George W. Brooks	1854 - 1856
W. K. McAlpin	1856 - 1858
J. H. Hutchinson	1858 - 1859
James Johnson	1859 - 1862
James G. Heard	1862 - 1870
Joshua W. McCown	1870 - 1873
J. J. Wyatt	1873 - 1882
W. H. Crowder	1882 - 1885
John A. Vernon	1885 - 1890
J. P. Buchanan	1890 - 1892
T. J. Evans	1892
R. J. Moore	1892 - 1896
E. C. Hughes	1896 - 1904
John S. Ewing	1904 - 1918
John Bailey	1918 - 1920
John Baylor	1920 - 1922
J. H. Hutchinson	1922 - 1924
H. P. Hutchinson	1924 - 1926
A. D. Bosse	1926 - 1928
Sam S. Bolton	1928 - 1930
A. D. Bosse	1930 - 1931
	1931 - 1942

William F. Borgstedte	1943 -
	1948
W. J. Lauter	1949 -
	1967
Thekla Borgstedte	1967 -
	1970
F. W. Wellmann	1971 -
	1980
Arnold (Sam) Winkelmann	1981 -
	1982
Lawrence F. Jensen	1983 -
	1990
Darlene Jane Helmer	1991 -
	1998
Kimberly Renee Jozwiak	1998 -
	2006
Douglas Zwiener	2007 -

**Justice of the Peace -**  
**Precinct 2**

Asbury Daniel	1860
	1860 -
Abiah P. Morgan	1864
	1864 -
Redding Vickers	1865
	1865-
Asbury Daniel	1866
	1866 -
David E. Whetstone	1870
	1870 -
William Keesee	1873
	1873 -
J. F. Kimbro	1881
	1881 -
Ben S. Rogers	1885
	1885 -
John E. Glass	1890
	1890 -
W. H. Campbell	1900
	1900 -
J. B. Matthews	1906
	1906 -
R. L. Miller	1909
S. E. Kitchen (apptd.)	1909
	1909 -
Henry Schaer (apptd.)	1914
	1914 -
J. B. Matthews	1916
	1916 -
Will Schaer	1918
	1918 -
J. S. Bovik	1920
	1921 -
G. C. Booth	1930
	1931 -
A. E. Mueller	1940
	1941 -
G. C. Booth	1942
	1943 -
Abie Lesser	1958
	1959 -
Joe C. Knight	1960
	1961 -
E. F. Carlisle	1970
	1971 -
Harry Lesser	1990
	1991 -
Phil Lesser	1994
Douglas Cone	1995 -

**Justice of the Peace -**  
**Precinct 3**

Davis E. Whetstone	1848
Shadrach B. Owen	1848
James R. Hines	1854 - 1856
Dulany McNeese	1856 - 1860
L. L. Lincecum	1860 - 1864
W. B. Lipscomb	1864 - 1865
D. E. Whetstone	1865
W. B. Lipscomb	1865 - 1870
Stephen F. A. Hackworth	1870 - 1882
Lafayette Kirk	1882 - 1886
R. P. Hackworth	1886 - 1888
E. P. Curry	1888 - 1892
Otto E. Binz	1892 - 1894
William P. Ewing	1894 - 1900
John H. Chappell	1900 - 1908
G. W. Booker	1908 - 1910
G. H. Chappell	1910 - 1918
J. H. Chappell	1918 - 1920
J. G. Rankin	1921 - 1924
W. R. Ewing	1925 - 1926
H. A. Becker	1927 - 1958
	1959 - Dec. 1,
John H. King	1965
(vacant)	1966
F. S. Bryan	1967 - 1984
George Myrick	1985 - 1990
	1991 - July 26,
Jim Tom House	1996
Roy May, Jr.	1997 - 2014
Ken Tofel	2015 - 2021
Dane Houston	April 5, 2022 -

**Justice of the Peace -**  
**Precinct 4**

John H. Hensley	1846- 1847 1847 - 1848
John B. Nunn	1848
William A. Higgins	1848
John B. Dupuy	1848
James L. Farquhar	1848
William Pressly	1850 - 1854 1854 - 1856 1856 - 1858
George W. Horton	1858
Shadrach S. Hosea	1858
George W. Horton	1859
Thomas H. Baker	1860
Thomas Hood	1860
Jesse Carmack	1862
George W. Horton	1864
D. D. Crumpler	1865
William L. Jackson	1866
Thomas Hood	1866
William H. Cammack	1867
T. Hood	1868
T.J. Newman	1869
E. Stockbridge	1869
B. D. Harrison	1870
Ernst Woyna (apptd. by Brig. Gen. JJ Reynolds)	1881 - 1884 1884 - 1888 1888 - 1903 1904 - 1942 1943 - 1946 1947 - 1952 1953 - 1964 1965 - 1990 1991 - 1994 1995 - 2014 2015 - 2022 2023 -
W. C. Broesche	
J. H. Bowers	
Ben C. Anderson	
J. J. McCain	
F. A. Homeyer	
Otto Wehring	
John D. Dixon	
Will Schwartz	
Herbert Bathe	
Glenwood H. Schwartz	
James McCune, Jr.	
William (Bill) Kendall	
Harold C. "Buddy" Riddle	

**Justice of the Peace -**  
**Precinct 5**

George D. Parker	1844 - 1848
John P. Dupuy	1844 - 1848
Andrew J. Griggs	1844 - 1848
John H. Middleton	1848 - 1854
John Dodd	1848 - 1854
John A. Haynie	1848 - 1854
John Q. Wallis	1854 - 1857
A. C. Baker	1857 - 1858
John A. Haynie	1858 - 1859
J. R. McDonald	1859 - 1860
A. C. Baker	1860 - 1862
William H. Sherman	1862 - 1866
A. C. Baker	1862 - 1864
D. E. Lallis	1864 - 1866
William H. Campbell	1866
J. T. Swearingen	1866 - 1870
R. M. Sanders	1870 - 1873
A. F. Rainwater	1873 - 1882
W. T. Willie	1882 - 1896
John Shannon	1896 - 1900
Carey W. Styles	1900 - 1902
Joseph Feil	1902 - 1908
G. W. Booker	1908 - 1912
Charles Schulte	1912 - 1923
John C. Shannon	1923 - 1926
O. A. Seward	1925 - 1938
Charles Schulte	1939 - 1964

**Justice of the Peace -**  
**Precinct 6**

R. M. Sanders	1856
A. J. Blackburn	1856 - 1860
Livingston Wilkinson	1858 - 1860
B. Tarver	1860 - 1864
A. J. Blackburn	1862
William B. Lipscomb	1862
D. E. Whetstone	1864
A. J. Blackburn	1864
W. B. Lipscomb	1866
L. H. Ogbourn (apptd by Brig.Gen.JJ Reynolds	1869
C. G. Campbell	1883 - 1892
Charles Von Bieberstein	1892 - 1895
William Wendt	1895 - 1903
J. W. Woods	1903
C. W. Fischer	1903 - 1906
J. F. Wendt	1906 - 1907
C. W. Fischer	1907 - 1921
W. H. Wedemeyer	1921 - 1940
W. C. Stoerner	1941 - 1944
R. A. Eckert	1945 - 1952
John W. Eckert	1953 - 1964

**Justice of the Peace -**  
**Precinct 7**

Martin F. Alexander	1848 - 1850
M. A. Alexander	1850 - 1856
Thomas Alford	1856 - 1858
E. W. Lucas	1858 - 1860
Thomas Alford	1860
E. W. Lucas	1860 - 1862
Samuel A. Black	1862
Thomas Alford	1862
E. W. Lucas	1862 - 1864
James A. Nisbet	1864
C. M. Seale	1864 - 1866
M. M. Maxwell	1866
Thomas Alford	1866 - 1881
W. P. Hill	1882 - 1888
J. H. Veazy	1888 - 1896
William Wendt	1887 - 1892
Z. G. Barton	1892 - 1896
G. A. Gindorf	1896 - 1898
H. J. Neinast	1898 - 1908
H. L. Luedemann	1908 - 1920

G. A. Gindorf	1921 - 1922
Fred Rosenbaum	1923 - 1928
Paul Klingsporn	1929 - 1934
Otto J. L. Kelm	1935 - 1964

**Justice of the Peace**  
**Precinct 8**

Samuel A. Black	1858
F. F. Ad. Giesecke	1858
Robert Y. Simms	1860
Adolphus Giesecke	1860
F. G. Fricke	1862
Josiah Daughtry	1864
M. G. Wilson	1865
Stephen Gilmore	1866
A. L. Steele	1891

**Justice of the Peace**  
**(no designation)**

Ivy McNeese	1841
James Love	1850
A. H. Bates	1850
William A. Dallas	1856
William B. Lipscomb	1856
John M. Hensley	1856
Elias G. Jackson	1859
T. E. Felder	1893



## **Constables -**

It should be noted that, with regard to the Constables, the first listing has no precinct number, but rather a name-of-precinct designation.

There is reference to two or more Constables being elected from a precinct in the early years of the County. At the time of printing, it was unable to be determined why two were elected.

There is also a span of time, when the County had up to 8 precincts.

There is also a list of Constables with no precinct designation.

### **Constable - Independence Precinct**

H. H. Swisher	1839
John G. Eubank	1839
Hays Covington	1840
Thomas M Blakey	1842

### **Constable - Washington Precinct**

W. W. Arrington	1837
Shelby C. Turnage	1839
Wm L. Ferrell	1839
John Bone	1841
Hardin White	1841
Daniel McGee	1842 - 1848
Richard Hairston	1848 - 1850
E. Quinus	1850 - 1854
Robert A. Lott	1854 - 1856
Nelson Maxey	1856 - 1882
Robert Sloan	1882 - 1886
Lewis Walton	1886 - 1898
R. M. Givens	1888 - 1892
J. S. Ewing	1892 - 1900
T. B. Conner	1900 - 1906
C. J. Krueger	1906

### **Constable - Hazard Precinct**

Cary D. Gary	1837
--------------	------

### **Constable - Hidalgo Precinct**

Harbor H. Swisher	1837
-------------------	------

### **Constable - Viesca Precinct**

John Montgomery	1837
-----------------	------

### **Constable - Lake Creek Precinct**

William Landrum	1837
-----------------	------

**Constable -**  
**San Jacinto**  
**Precinct**

Albert Gallatin 1837

**Constable -**  
**Walker Precinct**

Allen Ingram 1839  
John Arnett 1840  
Edward S. Woodard 1841  
William H. Payne 1842

**Constable -**  
**Mill Creek Precinct**

Abner Lee 1839  
David M. Estes 1841

**Constable -**  
**Mound Prairie**  
**Precinct**

James H. Smith 1839

**Constable -**  
**Sutherland**  
**Precinct**

Elliot M. Millican 1839

**Constable -**  
**Concord Precinct**

John Skorupski 1840  
Sampson Connell 1841

**Constable -**  
**Union Hill Precinct**  
**(6)**

John Brown 1858

**Constable -**  
**Liberty Precinct**

W. E. Allcorn 1841  
James Love 1844

**Constable -**

**Gay Hill Precinct**

W. C. J. Hill	1862
W. C. J. Hill	1864

**Constable -**

**(no precinct  
designation)**

Alson McCaleb	1848
James T. Connor	1856
John H. Glass	1857
David M. Lucas	1859
Caleb B. Longley	1864
John L. Jones	1864
Newman Sellers	1866
A. D. Gee	1881
Henry Roushausen	1881
James Farmer	1884
Logan Jones	1884
J. T. Shelby	1892
J. W. Farmer	1892
Herman Hopf	1892
Charles J. Krueger	1904

## **Constable – Precinct 1**

Nelson Maxey	1858 - 1865
F. M. Blythe	1865 - 1869
R. S. Niblett (apptd by Brig Gen James Biddle)	1869
Robert Sloan	1882 - 1887
R. M. Givens	1887 - 1888
John S. Ewing	1888 - 1902
T. B. Conner	1902 - 1904
C. J. Krueger	1904 - 1908
A. C. Krueger	1908 - 1910
C. J. Krueger	1910 - 1916
W. H. Buck	1916 - 1918
S. S. Bolton	1918 - 1922
W. H. Amason	1923 - 1928
H. C. Buck	1929 - 1940
F. W. Wellmann	1941 - 1944
Theo Kolkhorst	1945 - 1946
Walter Hinze	1947 - 1988
Don R. Hinze	1989 - 2000
Earl Wilson	2001 - 2003
Dave H. Hubbard	2003 - Aug. 31, 2004
(Vacant)	Sept. 1 - Dec. 31, 2004
Mark Kettler	2005 – May 31, 2007
(Vacant)	June 1, 2007 - Dec. 31, 2008
Troy Bennett	2009 - 2012
Ken Holle	2013 -

## **Constable - Precinct 2**

Charles Covington	1848 - 1854
John C. Anglin	1854
Charles Covington	1854
Richard G. Clampitt	1856 - 1858
Samuel Stephens	1858 - 1860
James L. Holmes	1860 - 1862
M. B. Lallier	1862 - 1864
W. A. Balkwin	1864 - 1865
Lawrence E. Brown	1865 - 1866
Sam Stephens	1866 - 1870
W. K. Haynie	1870 - 1871
R. A. Harvin	1871 - 1872
T. F. Kimbro	1872 - 1873

R. S. Cook	1873 - 1874
Ben S. Rogers	1875 - 1883
J. M. Hannah	1883 - 1886
M. H. Schley	1866 - 1887
J. H. Foster	1887 - 1892
George Route	1892 - 1894
S. E. Kitchen	1894 - 1896
W. H. Crawford	1896 - 1898
S. E. Kitchen	1898 - 1900
Jack Kindricks	1900 - 1902
S. J. Kindrick	1902 - 1906
H. W. Hughes	1906 - 1910
W. W. Fife	1910 - 1914
F. O. Prescott	1914 - 1918
Clarence Muse	1918 - 1922
E. O. Routt	1923 - 1930
O. E. Routt	1931 - 1938
E. O. Routt	1939 - 1950
E. F. Carlisle	1951 - 1960
Roland McNeil	1961 - 1964
N. L. Winfield	1965 - 1972
Frank Gurka	1973 - 1988
Carroll "Butch" Faske	1989 - May 29, 2020
George D. "Trey" Holleway, III	2021 – 2024
Seth Klehm	2025 -

### **Constable -** **Precinct 3**

B. B. Mahon	1854 - 1856
D. J. Goodlett	1856 - 1858
T. F. Palmer	1858 - 1873
O. Crozier	1873 - 1882
F. M. Harvin	1882 - 1883
Paul Fricke	1883 - 1886
Frank Hubert	1886 - 1892
C. C. Boyd	1892 - 1894
W. L. Sallis	1894 - 1896
R. H. Burch	1896 - 1905
Joe B. Guyton	1905 - 1908
Joe R. Free	1908 - 1909
R. H. Burch (apptd)	1909 - 1914
S. S. King	1914 - 1918
W. G. Humphreys	1918 - 1924
Dick Kay	1925 - 1926
Henry Enax	1927 - 1940

Roy H. Walker	1941 - 1942
W. H. Tappe	1943 - 1960
J. H. Hawley	1961 - 1964
Alfred Boeker	1965 - 1984
Vernon Runge	1985 - 1986
Wade "Bubba" Jurries	1987 - 1992
Nelson Zibilski	1993 - 2016
David Blakey, Jr.	2017 - Sept. 5, 2023
Darius Smith	Oct. 24, 2023 - 2024
Brad Kuecker	2025 -

## **Constable -** **Precinct 4**

Oliver P. Carrington	1850 -1851
James M. Oliphant	1851 - 1854
James Thomas Connor	1854 - 1858
James T. Connor	1858 - 1860
J. T. Connor	1860 - 1862
Robert Lisk	1862 - 1864
M. G. Reddick	1864 - 1865
J. R. Brophy	1865 - 1866
O. Crozier	1866 - 1869
A. Wood	1869 - 1871
C. H. Delang	1871 - 1874
Joe Hoffmann	1874 - 1882
J. F. Smelser	1882
John L. Irvin	1882 - 1883
S. R. Keneda	1883 - 1884
J. F. Smelser	1884
R. H. Lauderdale	1884 - 1886
D. E. Teague	1886 - 1888
James Cunningham	1888 - 1890
T. D. Garrett	1890 - 1892
C. C. Boyd	1892
H. M. Bryan	1862 - 1897
Gus H. Jackson	1897 - 1898
William Rust	1898 - 1900
Adolph Vogelsang	1900 - 1906
M. G. Dement	1902 - 1906
J. R. Cunningham	1906 - 1908
Sam M. Craig	1908 - 1912
Frank Wilkening	1912 - 1916
Roscoe Fincher	1916 - 1918
G. H. Boone	1918 - 1920
Alex Schwartz	1921 - 1924
Jim Little	1925 - 1928
Ira Boone	1929 - 1944
Walter Harmel	1945 - 1946

H. F. Knittel	1947 - 1960
L. B. Tarkington	1961 - 1962
W. H. Jones	1963 - 1964
Berry Lee Goldberg	1965 - 1992
Shirley Witte	1993 - 2000
Billy W. Rosenbaum	2001 - 2012
Mark Kramer	2013 - 2017
(vacant)	2018
Greg Rolling	2019 -

## **Constable -** **Precinct 5**

John B. Nunn	1844 - 1846
James H. Meek	1846 - 1848
John P. Ferrell	1848 - 1850
A. J. Kerchival	1850 - 1854
John H. Glass	1854 - 1856
W. A. Beaird	1856 - 1858
John H. Glass	1858 - 1860
E. G. Jackson	1860 - 1862
R. Y. Harris	1862 - 1864
W. H. Campbell	1864 - 1865
W. A. Dossett	1865 - 1866
John H. Glass	1866 - 1882
G. A. Mayo	1882 - 1886
J. W. Farmer	1886 - 1896
Allen Kirk	1896 - 1898
Tom Hill	1898 - 1901
Thomas Hill	1901 - 1902
Ben F. Bailey	1902 - 1910
Ben Winkelmann	1910 - 1918
E. F. Clay	1918 - 1924
Charles A. Tappe	1925 - 1966

## **Constable -** **Precinct 6**

David M. Estes	1844
F. M. Brown	1856
John T. Watson	1856
W. W. Craig	1860
T. M. Craig	1867
J. S. Williams	1880
Joe M. Woods	1882
J. W. Woods	1884
Joseph M. Woods	1885
Joseph M. Woods	1886
J. M. Woods	1888
J. M. Williams	1891
H. Hopf	1892
William Clark	1894
Miles E. Wheelless	1895
J. W. Woods	1896 - 1904
A. J. Kramer	1904 - 1912
E. Linnstaedter	1912 - 1914
Herman King	1914 - 1916
Henry Houmann	1916 - 1920
C. W. Grote	1921 - 1934
Emil H. Duerr	1935 - 1954
Norman Gummelt	1955 - 1966

## **Constable -** **Precinct 7**

William G. Fisher	1844 - 1845
Hilliquist Landers	1845 - 1848
Marshall G. Dodd	1848 - 1850
B. A. Shaw	1850 - 1854
K. D. Gill	1854 - 1856
Caleb Longley	1856 - 1862
Aaron English	1856 - 1862
Milton M. Maxwell	1862 - 1866
R. M. Pearson	1866 - 1882
Robert A. York	1866 - 1881
R. H. Lauderdale	1882 - 1884
D. H. Barton	1881 - 1887
J. C. Dillen	1885 - 1892
J. K. Roberts	1888 - 1900
R. H. Lauderdale	1892 - 1900
Tom M. Barton	1900 - 1918
H. G. Stegmann	1918 - 1920



J. J. Neinast	1921 - 1926
August Rode	1927 - 1930
J. J. Neinast	1931 - 1934
Louis Helm	1935 - 1940
Albert Kieke	1941 - 1944
Otto Sehlke	1945 - 1948
Johnnie Dahmann	1949 - 1954
Herbert Meyer	1955 - 1956
Johnnie Dahmann	1957 - 1960
M. W. Neinast	1961 - 1966

## **Constable -** **Precinct 8**

W. A. Stuckert	1859 - ?
C. G. Campbell	1860
C. G. Campbell	1864 - ?

## **The following were elected office holders for the years listed -**

### **Coroner**

W. P. Smith	1837 - 1839
Jerome B. Robertson	1839 - 1840
James Farmer	1840 - 1844
Hardin White	1844 - 1848
Malcolm Ferrell	1848 - 1850
John G. Knapp	1850 - 1856
Oliver P. Carrington	1856 - 1858
Thomas M. Burk	1858 - 1860
Joseph C. Miller	1860 - 1861
J. S. Young	1861 - 1862
Mr. Madden	1862 - 1864
W. D. Wood	1864 - ?

### **County Surveyor**

Green H. Coleman	1840 - 1841
Nathan Clappitt	1841 - 1846
O. H. P. Garrett	1846 - 1850
Dominicus Parker	1850 - 1856
Nathan A. Clappitt	1856 - 1858
Albert Giesecke	1858 - 1873
N. A. Clappitt	1865 - 1866
J. R. Von Bieberstein	1866- 1873
Henry Carl Schmidt	1873 - 1874
H. L. W. McClung	1874 - 1883
Thomas Phears	1883 - 1892
Hermann R. Von Bieberstein	1892 - 1900
Alfred Jeffries	1900 - 1904
W. B. Francis	1904 - 1914
J. W. Dallas	1914 - 1918
W. B. Francis	1918 - 1922
W. M. Morriss	1923 - 1924
W. B. Francis	1925 - 1940
Louis Beazley	1941 - 1956

### **District Surveyor**

O. H. P. Garrett	1854 - 1847
Nathan Clappitt	1857 - 1864

## **Other offices or licenses of interest found in the Bond Records -**

### **PUBLIC WEIGHER**

L. B. Wallace	1925 - 1930
E. H. Becker	1931 - 1932
Walter Werchan	1933 -1934
Calvin Sayles	1935 - 1938
O. B. Zernial	1939 - 1942
W. W. Wendt	1943 - 1950
Oscar Hoffmann	1951 - 1960

### **Alcalde - Municipality of Washington**

William P. Smith	1837
------------------	------

### **Mayor of Washington**

W. W. Arrington	1838
Robert A. Lott	1854

### **County School Superintendent (rural schools)**

C. Klaerner	1908 - 1914
William F.A. Boemer	1916 - 1921
Frederick Turner	1921 - 1925
Melvin H. Ehlert	1925 - 1946
W. O. Dannhaus	1947 - 1975

### **Ferry Licenses granted**

John W. Hall - Washington Ferry	1837
D. L. Millican - Millican's Crossing	1837
W. W. Arrington	1842
John Watson	1866
James Baldridge - Baldridge's Ferry	1866
C. P. Munroe	1871
Fayette Smith – Washington Ferry	1884

**The following Tax Rates were approved by the Commissioners' Court of Washington County in the years noted.**

<u>Year</u>	<u>Tax Rate</u>	<u>Year</u>	<u>Tax Rate</u>
1867	½ of state tax	1868	½ of state tax
1869	.50 - Special	1870	0.54
1871	0.55	1872	\$2 per Male & ½ of state taxes
1873	0.50	1874	0.36
1875	0.55	1876	0.80
1877	0.60	1878	0.40
1879	0.40	1880	0.25
1881	0.25	1882	0.20
1883	0.50	1884	0.65
1885	0.65	1886	0.65
1887	0.58	1888	0.55
1889	0.55	1890	0.55
1891	0.51	1892	0.50
1893	0.50	1894	0.50
1895	0.40	1896	0.50
1897	0.50	1898	0.50
1899	0.50	1900	0.50
1901	0.50	1902	0.65
1903	0.60	1904	0.60
1905	0.575	1906	0.575
1907	0.55	1908	0.35
1909	0.70	1910	0.70
1911	0.70	1912	0.70
1913	0.70	1914	0.55
1915	0.50	1916	0.50
1917	0.05	1918	0.50
1919	0.50	1920	1.07
1921	0.70	1922	0.70
1923	1.72	1924	1.71
1925	1.615	1926	1.50
1927	1.50	1928	1.50
1929	1.50	1930	1.50
1931	1.50	1932	0.96
1933	1.50	1934	1.20
1935	1.06	1936	1.04
1937	0.90	1938	0.80
1939	0.80	1940	0.77
1941	0.77	1942	0.77
1943	0.77	1944	0.77
1945	0.77	1946	0.77
Year	Tax Rate	Year	Tax Rate
1947	0.77	1948	0.77
1949	0.77	1950	0.77
1951	0.77	1952	0.77

1953	0.77	1954	0.77
1955	0.77	1956	0.77
1957	0.77	1958	0.77
1959	0.77	1960	0.77
1961	0.77	1962	0.77
1963	0.77	1964	0.77
1965	0.77	1966	0.77
1967	1.30	1968	1.20
1969	1.20	1970	1.20
1971	1.25	1972	1.25
1973	1.25	1974	1.25
1975	1.25	1976	1.25
1977	1.25	1978	0.80
1979	0.80	1980	0.80
1981	0.46	1982	0.1814
1983	0.197	1984	0.2052
1985	0.2426	1986	0.2831
1987	0.3163	1988	0.2969
1989	0.3281	1990	0.3557
1991	0.3921	1992	0.5077
1993	0.4771	1994	0.4771
1995	0.4771	1996	0.4617
1997	0.4567	1998	0.4649
1999	0.484	2000	0.484
2001	0.45	2002	0.4516
2003	0.4516	2004	0.4435
2005	0.4435	2006	0.4435
2007	0.4349	2008	0.426
2009	0.426	2010	0.4358
2011	0.4408	2012	0.4426
2013	0.4626	2014	0.5211
2015	0.5211	2016	0.5271
2017	0.5171	2018	0.5171
2019	0.4950	2020	0.4950
2021	0.5032	2022	0.3860
2023	0.3840	2024	0.3840

As research was being done on the Tax Rates, it became apparent that a comparison of years would be difficult, if not impossible as, in some years, the County incurred debt to build facilities (a new courthouse in 1883 and again in 1938-39, for instance; a new jail in 1991-92, for instance; or when the County took over 911 dispatch in 2014/2015) or state laws may have changed requiring the County to perform a certain duty that required taxation.

A record of Tax Rates could only be found back to 1867.